

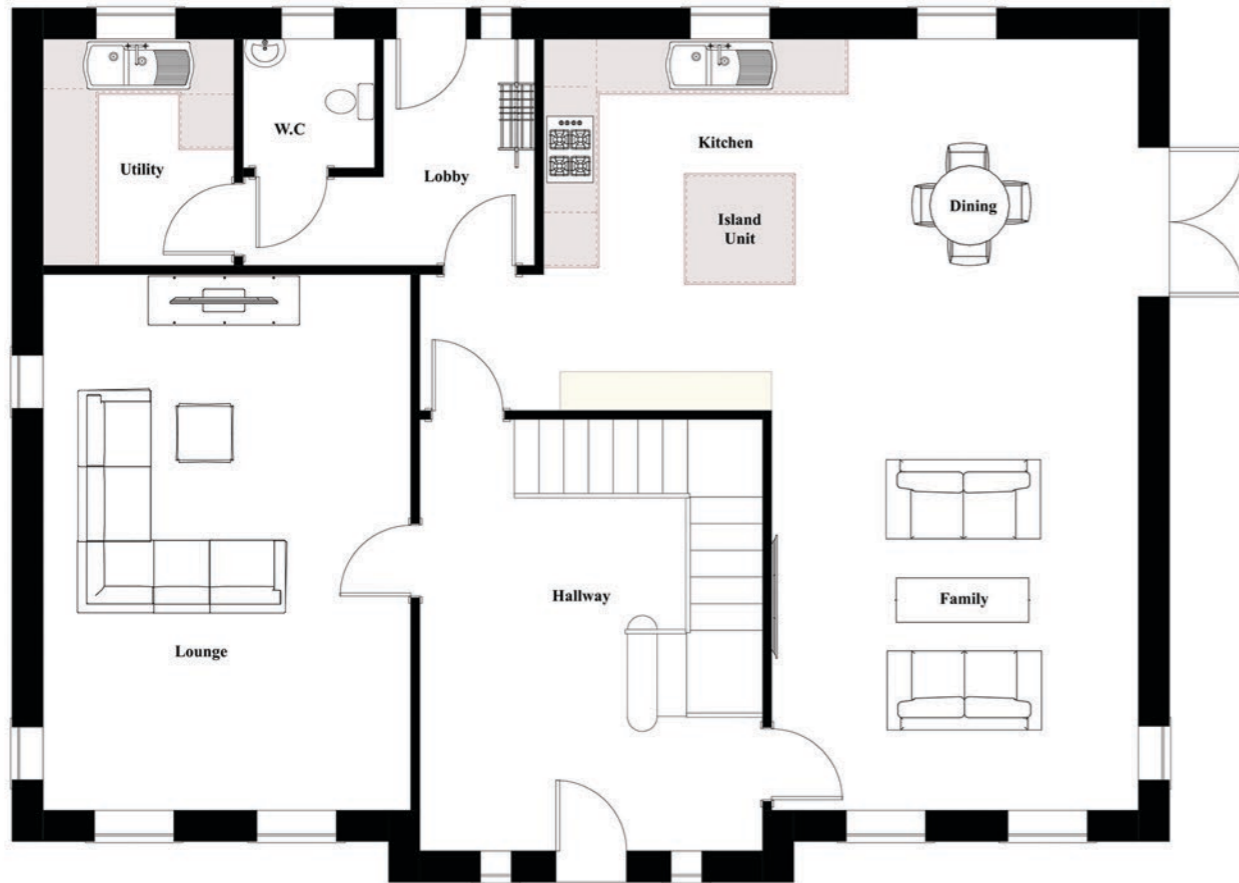
"THE COUGHLANSTOWN"



House Design #404



BACKWALL.
BUILDING COMPANY



THE COUGHLANSTOWN #404.

FLOOR AREA:	224.12 sq.m	2412 sq.ft
FRONTAGE:	13.1 m	
KITCHEN / DINING		6700 X 4200
FAMILY		4100 X 4500
HALLWAY		3800
LOUNGE		4100 X 6000
BEDROOM 1		4100 X 4100
BEDROOM 2		4100 X 4100
BEDROOM 3		4100 X 3200
BEDROOM 4		4100 X 3200
BATHROOM		2800 X 2200

APPROXIMATE ROOM SIZES



GROUND FLOOR



FIRST FLOOR

"THE COUGHLANSTOWN"



House Design #404